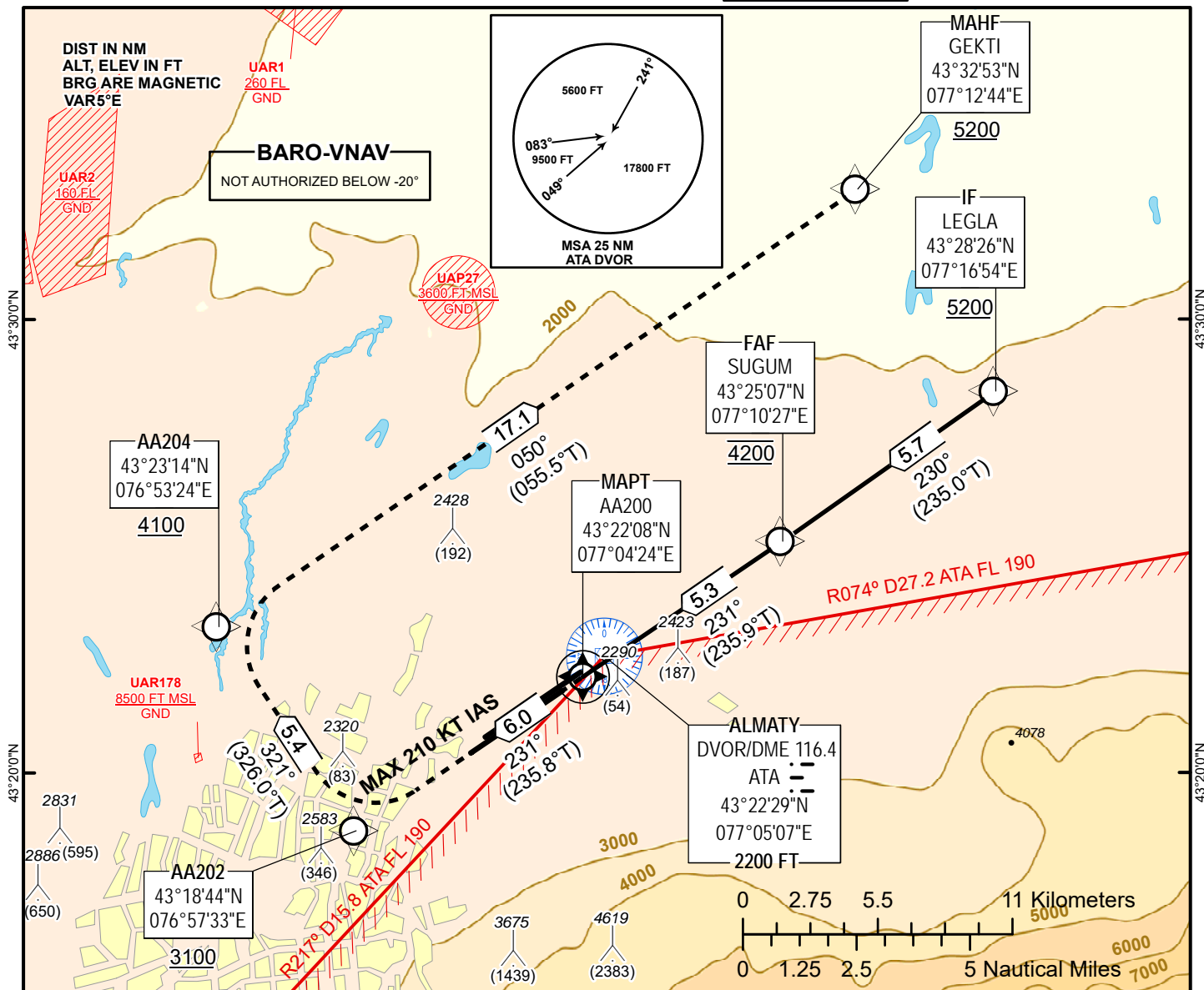


INSTRUMENT
APPROACH
CHART - ICAO

AERODROME ELEV 2238 FT
HEIGHTS RELATED TO
THR 23L ELEV 2236 FT

ALMATY APPROACH 118.3
ALMATY RADAR 126.8
ALMATY TOWER 119.4
ALMATY ATIS (EN) 129.8
ALMATY ATIS (RU) 135.1

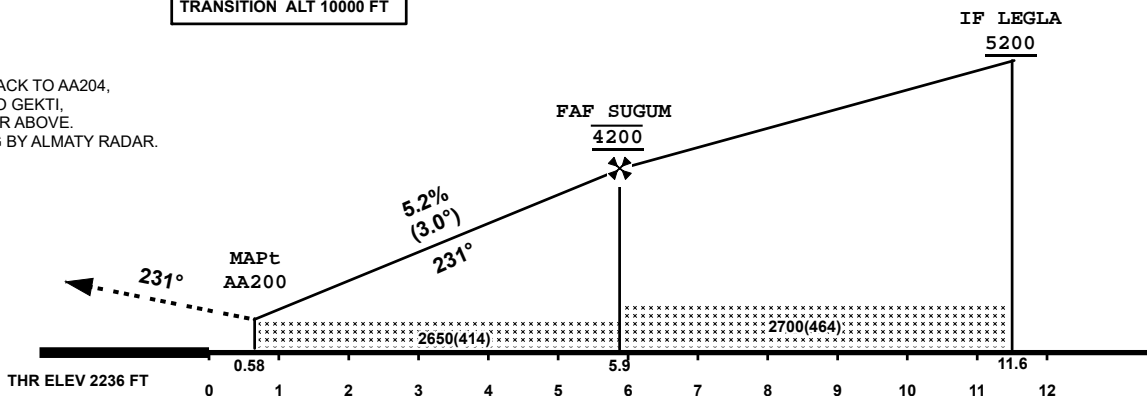
ALMATY
RNP RWY 23L



TRANSITION ALT 10000 FT

MISSED APPROACH:

CLIMB TO AA202, TRACK TO AA204,
CONTINUE TRACK TO GEKTI.
CLIMBING TO 5200 OR ABOVE.
EXPECT VECTORING BY ALMATY RADAR.
MAX 210 KT IAS.



| Aircraft Category | A | B | C | D |
|---------------------|------------|------------|------------|------------|
| LNAV OCA (OCH) | 2650 (414) | | | |
| LNAV/VNAV OCA (OCH) | 2540 (304) | 2550 (314) | 2570 (334) | 2600 (364) |

| GS | Kt | 80 | 100 | 120 | 140 | 160 | 180 |
|-----------------|--------|-----|-----|-----|-----|-----|-----|
| Rate of descent | ft/min | 420 | 530 | 630 | 740 | 840 | 950 |

CHANGE: Editorial.

ALMATY

AERONAUTICAL DATA TABULATION

TABULAR DESCRIPTION

| IAP RWY 23L | | | | | | | | | | | |
|---------------|-----------------|---------------------|------------|---------------|------------------------|-------------|----------------|-------------|----------|------------|--------------------------|
| Serial Number | Path Descriptor | Waypoint Identifier | Fly - over | Course °M(°T) | Magnetic Variation (°) | Distance NM | Turn Direction | Altitude FT | Speed KT | VPA (°) FT | Navigation Specification |
| 010 | IF | LEGLA | | | | | | +5200 | -230 | | RNP APCH |
| 020 | TF | SUGUM | - | 230(235.0) | 5.12 | 5.7 | - | @4200 | -180 | | RNP APCH |
| 030 | TF | AA200 | + | 231(235.9) | 5.12 | 5.3 | - | @2470 | -180 | -3 | RNP APCH |
| 040 | TF | AA202 | - | 231(235.8) | 5.12 | 6 | - | +3100 | -210 | 1.4 | RNP APCH |
| 050 | TF | AA204 | - | 321(326) | 5.12 | 5.4 | R | +4100 | -210 | 1.4 | RNP APCH |
| 060 | TF | GEKTI | - | 50(55.5) | 5.12 | 17.1 | R | +5200 | -210 | 1.4 | RNP APCH |

WAYPOINT LIST

| IAP RWY 23L | | |
|---------------------|-------------|-------------|
| Waypoint Identifier | Coordinates | |
| LEGLA | 432825.52N | 0771654.27E |
| SUGUM | 432507.31N | 0771026.74E |
| AA200 | 432208.09N | 0770423.97E |
| AA202 | 431844.32N | 0765733.06E |
| AA204 | 432314.16N | 0765323.71E |
| GEKTI | 433253.40N | 0771244.40E |